

09 2025

One Idea. One Country. One Chapter. Welcome to PMI Germany Chapter



Project
Management
Institute.
Germany



Eine Idee. Ein Land.
Ein Chapter.
One Idea. One Country.
One Chapter.

PMI Germany Chapter e. V.

© Joerg Glunde, Vice President Members, 13.09.2025



Project
Management
Institute.
Germany

Contents

- [PMI Germany Chapter – Origins, Facts and Figures](#)
- [Benefits – Advantages of becoming a PMI Member](#)
- [Chapter Governance – How do we reach the Benefits for our Chapter Members](#)
- Volunteering – how we engage
- [Communication – Internal and External Channels](#)
- [Tips for your membership](#)

The PMI Germany Chapter

Facts, Figures, Data



We promote professional project management in Germany through networking, qualification & social engagement

PMI Germany Chapter - the forum for project managers in Germany

Strategy

Pillars

Purpose

The reason and sense why we do what we do

We offer a / are the network for all people who want to develop with project management, change something and be successful.

Vision

What the future world will look like if we are successful

The community implements change professionally and successfully through the exchange, transfer of knowledge and methodological development of project management.

Role

How we behave and how we want to be in order to realize this vision

We openly and competently connect people, knowledge, trends and methods in project management.

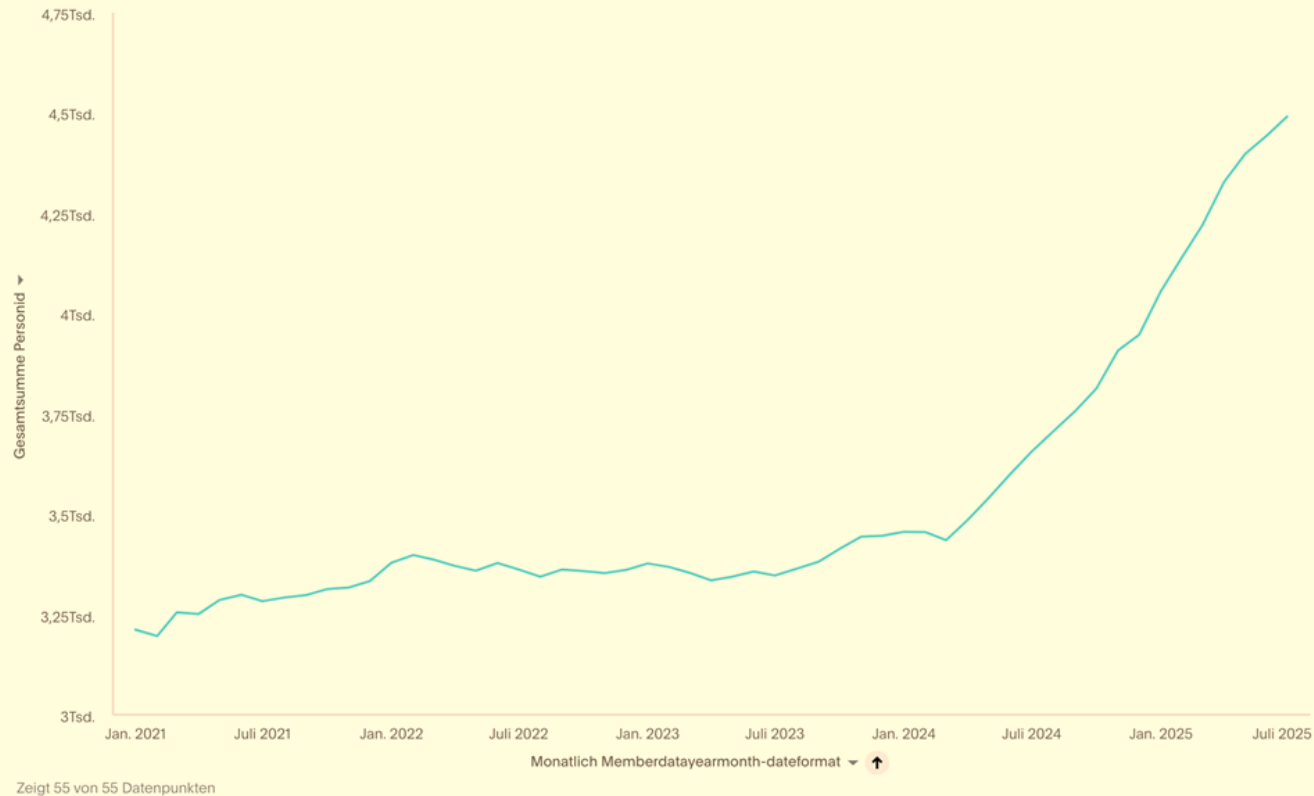
The PMI Germany Chapter

Facts, Figures, Data

- PMI was founded in 1969 in Philadelphia. Today, it has members in almost all countries of the world.
- The PMI Germany Chapter is a registered association and is not for profit even if not officially recognized as such.
- The PMI Germany Chapter was registered in the Berlin-Charlottenburg Register of Associations on Sept. 26, 2019, and the merger was registered on Dec. 21, 2020. Prior to that was a 30-year history with four chapters in Germany.
- The size of the PMI Germany Chapter is an extensive and attractive offering.
- Regional local groups provide personal contacts, exchange, and networking.
- Communities of Practice (CoPs) enable professional exchange, regionally and across regions.

PMI Germany Chapter – Progressively Increasing

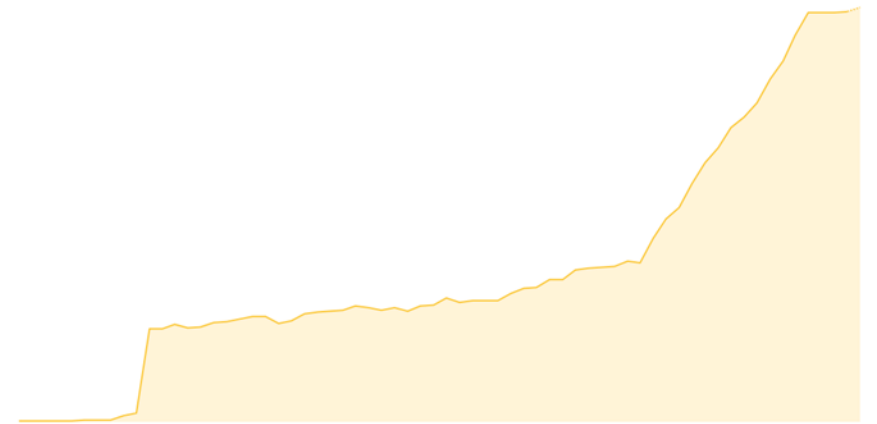
KPI Active Members Chart - bis letzten Monat



Kopie von Active Student Members

472

Aug. 2025
↑ 1,07 % (467) Juli 2025 >

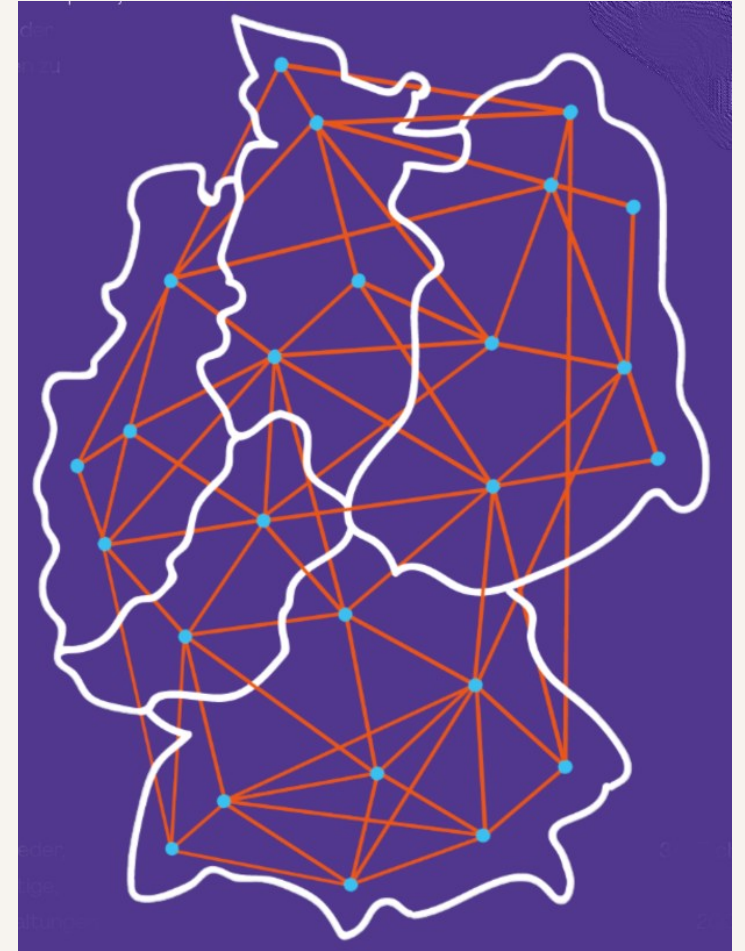


Composition of the PMI Germany Chapter

- Five regions (administrative)
Supporting organizational level that assists the local groups in their tasks.
- including 25+ local groups (where activities take place)
Interaction space for members and volunteers. Activities for and with members and volunteers take place here. Events, projects, initiatives, meetings.

>> Local Groups

- **Approx. 11,000 PMI members in Germany**
 - of which approx. 4,500 chapter members in the Germany chapter
 - of which about 160 volunteers (the essential core of the chapter)



Benefits

Your benefits as a member of the chapter



Benefits – Advantages for Chapter Members



Worldwide Network of passionate Project Managers +
Local Network of 27 (!) Local Groups



Monthly Newsletter



Nationwide discounts at Chapter Events and partner events



- Participation in **Members-only** Events
- Contribution to chapter projects
- Annual Volunteer Event
- Participation in Member only programs:
 - Female Empowerment Program,
 - Mentoring Program,
 - Social Responsibility Program,
 - Youth Empowerment Program
- Webinars – continuous learning



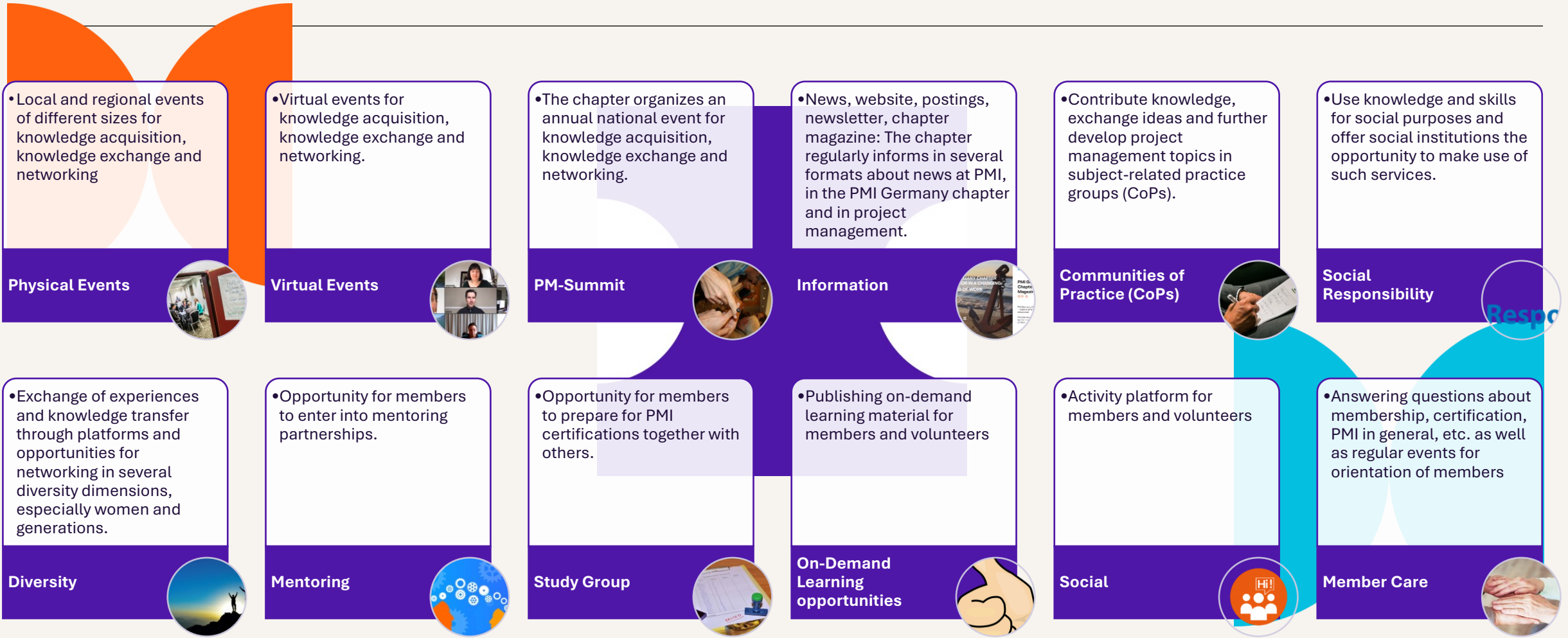
Participation in our Communities of Practice (CoPs) and in interest groups of partners



University Circle with valuable contacts to universities as well as other interesting Circles on topics such as diversity, social responsibility, etc.

In Detail: Offers from the chapter for you

Offers of the chapter to members and those interested in project management.



Member Orientation - Member Value and Benefits

As a Member, you are eligible to join various Local Groups

Region North:

LOCAL GROUP HAMBURG
LOCAL GROUP HANNOVER
LOCAL GROUP BREMEN
LOCAL GROUP BRAUNSCHWEIG/WOLFSBURG

Region East:

LOCAL GROUP BERLIN
LOCAL GROUP LEIPZIG
LOCAL GROUP DRESDEN
LOCAL GROUP THÜRINGEN (Erfurt)
LOCAL GROUP NORDOST (Rostock)

Region West:

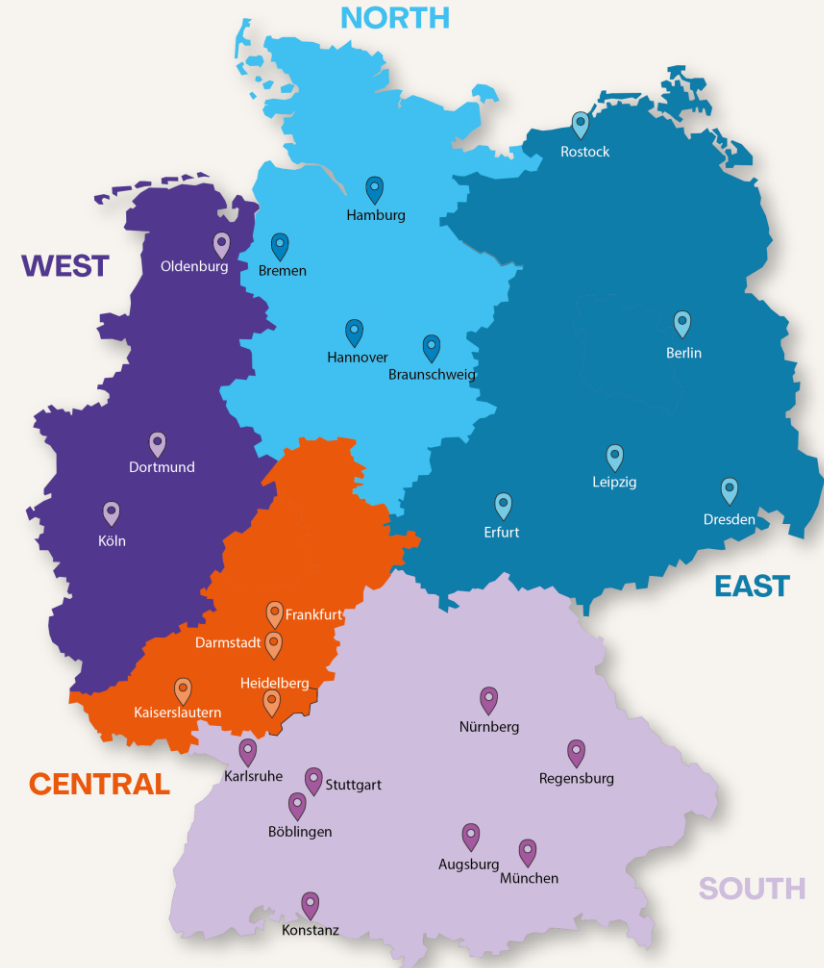
LOCAL GROUP RUHRGEBIET (Essen)
LOCAL GROUP RHEINLAND (Köln)
LOCAL GROUP WESER-EMS (Oldenburg)

Region Central:

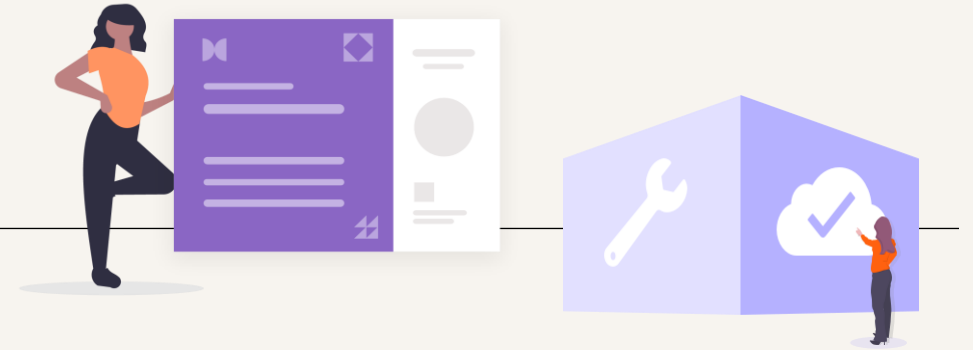
LOCAL GROUP RHEIN-NECKAR/ HEIDELBERG (Heidelberg)
LOCAL GROUP SOUTHWEST (Kaiserslautern)
LOCAL GROUP RHEIN-MAIN (Frankfurt)
LOCAL GROUP DARMSTADT
LOCAL GROUP MAINZ

Region South:

LOCAL GROUP STUTTGART
LOCAL GROUP MÜNCHEN
LOCAL GROUP REGENSBURG
LOCAL GROUP NÜRNBERG
LOCAL GROUP AUGSBURG
LOCAL GROUP KARLSRUHE
LOCAL GROUP KONSTANZ
LOCAL GROUP BÖBLINGEN



... plus offers from PMI



- ❖ Interact with other members, credential holders, and volunteers around the world. That's 700,000+ cool people like you.
- ❖ Enjoy free access to the many ways of earning PDUs.
- ❖ Access to ready-to-use tools and templates to collect and manage project information.
- ❖ As member, informative and insightful publications to keep you abreast of the latest trends.
- ❖ Use knowledge sharing, volunteering, and networking opportunities at the local and global level/s.
- ❖ eDiscover, Learn & Connect on >>> Projectmanagement.com, the one-stop shop for project management answers.
- ❖ Access to >>> PMI's global standards including a digital edition of *A Guide to the Project Management Body of Knowledge (PMBOK Guide) – Seventh Edition*, and on top free access to PMI Standards+™ and PMI Infinity™
- ❖ Access to Career coaching, a feature of PMI's job-searching site, The Project Management Job Board.
- ❖ Get special prices on PMI credential exams and renewal, conferences, seminars, books, products, and training tools is offered through PMI Store.
- ❖ Access to a library of webinars, addressing project management trends, best practices, how-to guides, and much more.

Seriously, what are you waiting for? Visit the website at www.pmi.org/Membership and join today.

... and for students?



- ❖ Download the PMBOK® Guide for free
- ❖ Save on career-advancing certifications
- ❖ Tap into a local and global community of professionals
- ❖ Power up your skills with on-demand webinars and insights
- ❖ Stay ahead of deadlines using 1,000+ free tools and templates
- ❖ Unlock access to real-world insights and opportunities
- ❖ Let PMI be your guide
- ❖ **And enjoy all chapter member benefits as described before**

- ❖ For only 32 US-\$ per year:

- PMI Membership
- PLUS Chapter Membership in the PMI Germany Chapter

Seriously, what are you waiting for? Visit the website at <https://www.pmi.org/membership/student> and join today.

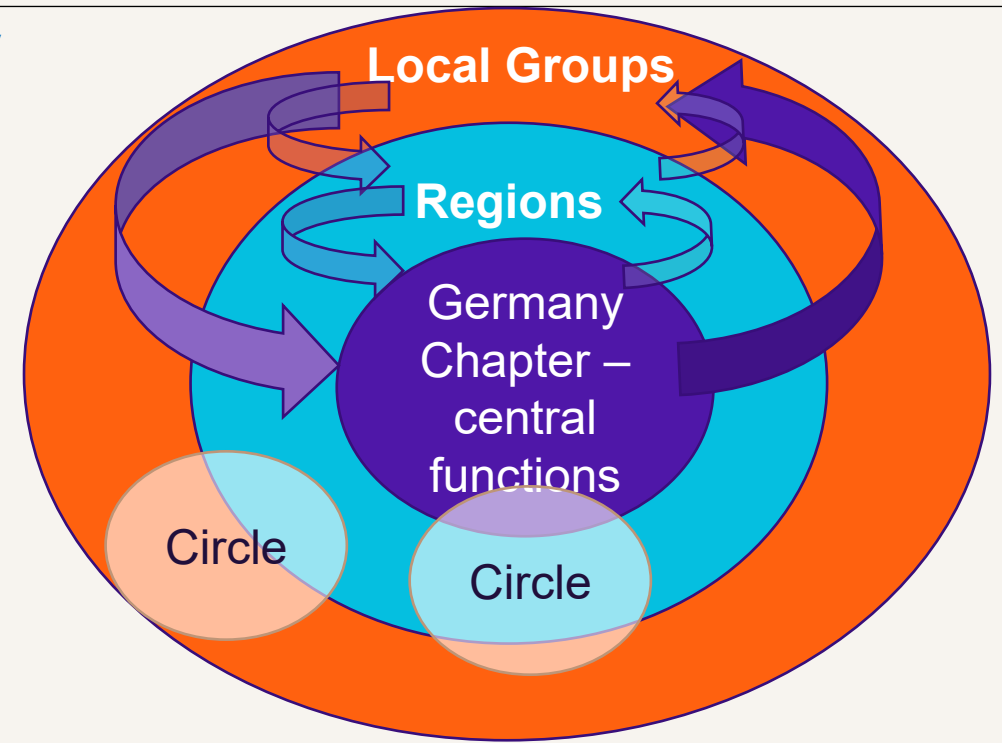
Chapter Governance

Organization and structure

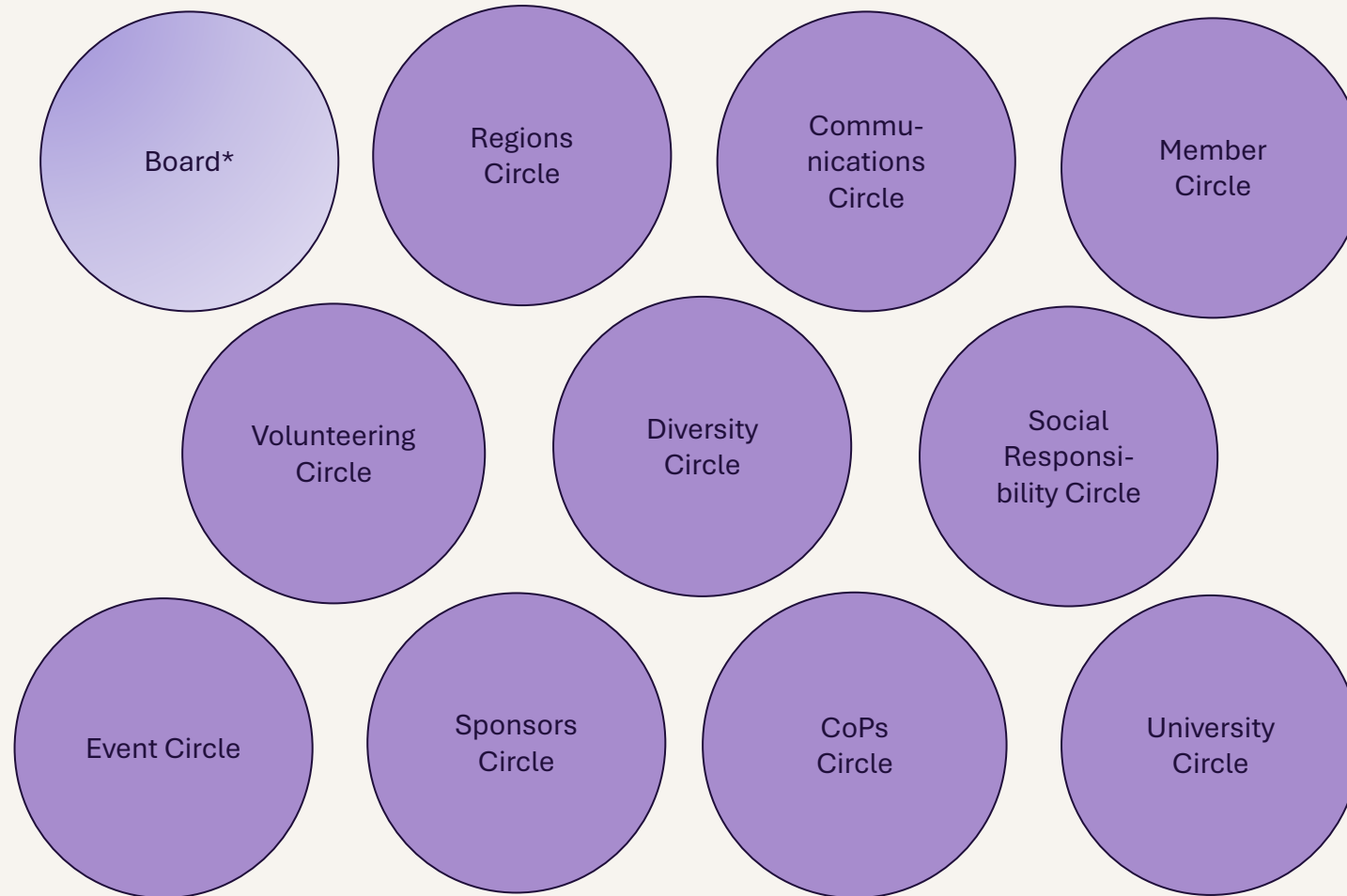


Organization of the Chapter

- ❖ Responsibility for tasks of the Chapter for strategy implementation and achievement of its goals is broken down to the resorts described in the Association Rules.
- ❖ To support this, there are Teams, Circles, Local Groups and Projects. Circles, Local Groups and Projects are the organizational elements of the Chapter to implement its strategy and tasks.
 - ✓ **Board** Meeting of the board of directors to plan and control the tasks of the chapter necessary to fulfill the purpose of the association.
 - ✓ **Board Resorts** are responsible for tasks in the chapter and serve to achieve the strategic goals of the chapter.
 - ✓ **Teams** support the department in certain tasks and consist of members of a resort.
 - ✓ **Circles** can be located within a resort or operate across several functions; responsibility for a Circle is assigned to one resort in each case.
 - ✓ **Local Groups** provide chapter services at the local level and are each assigned to a regional resort.
 - ✓ **Circles and Local Groups** are generally designed to be permanent. The closure of a Circle results from changes in strategy and tasks of the chapter.
 - ✓ **Projects** also serve the chapter's task fulfillment and strategy implementation. They are temporary in nature.



As volunteer, which are the different Circles where you could be part of and contribute?



* after election for the board of directors

What is a Community of Practice?



Group of enthusiastic Chapter members who

- **exchange** ideas on practicable aspects in the respective "area"
- **share** experiences through publications.

Aim: to generate new ideas and concepts for practical application, which can then be used in practice.

Member Orientation - Member Value and Benefits

Practice is in the Foreground

Every day, we are not in the ivory tower of theory, but try to find out and communicate which concepts, approaches or ideas work particularly well.

That is why the focus of a CoP should be on the "P" - namely "Practice".

Hear the Podcast –

What is a CoP in general and how CoPs became a part of the Chapter:

[>>> Podcast with Vice President Members Joerg Glunde and Thomas Wuttke \(German\).](#)

As Member you will be the Core of our Communities of Practice



CoP
Life Sciences

Lean-Agile
CoP

CoP
Energy

CoP
KMU

General
PM-CoP

CoP
AI

Chapter Governance

Principles

- **Regional and Local Ownership:** Chapter activities take place mainly in the local groups. Local volunteers initiate and implement events and all other activities

Teams in the region with the local groups are the foundation of the PMI Germany Chapter. We focus on contributing to the network instead of striving for a position in the hierarchy.

→ As much autonomy as possible, as few central functions, as necessary.

→ Regional service delivery is owned by the regions.

- The Region Circle initiates, picks up, drives and supports activities in the local groups.
- We communicate transparently, with all stakeholders.
- We believe in the idea of servant leadership. Servant leadership follows the idea to develop the target group in a positive way in order to enable them to make a positive contribution and to achieve the goals set. *Reference:* <https://www.greenleaf.org/what-is-servant-leadership/>).
- Our appreciation is dedicated to the time and energy that volunteers contribute to deliver value and to ensure the future of our chapter. We do not want to overburden the self-commitment of members, but rather recognize the contributions of volunteers for the benefit of the chapter and PMI, as well as the project management profession.
- With mutual respect and observing ethical principles, we support applying the ethical principles according to the PMI Code of Ethics and being open to others (diversity).

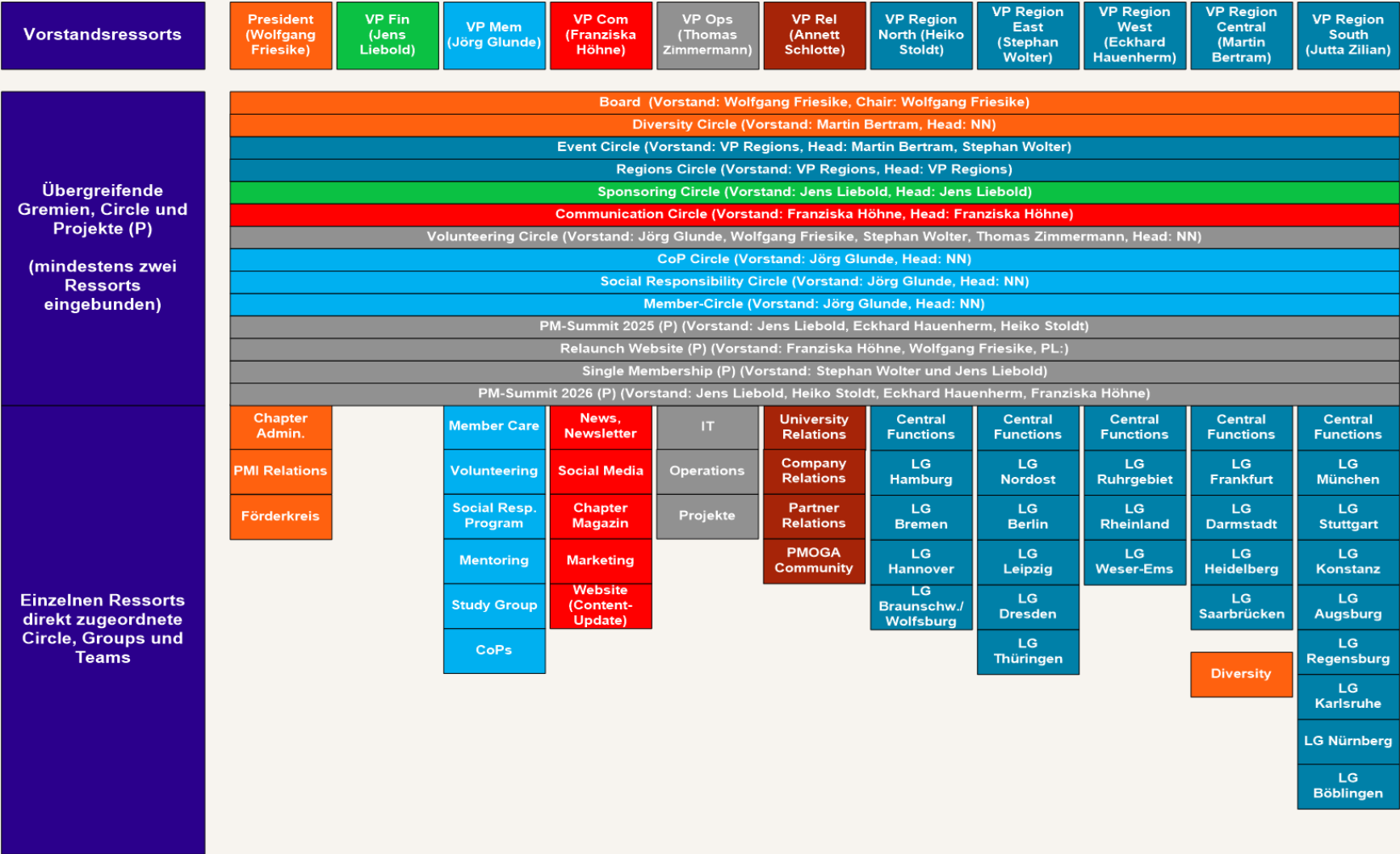
Chapter Governance

Organisation and Leadership

- The association is represented and managed by a board with 11 current members (between five and 15 are possible).
- The board is elected for a period of three years by the general meeting; re-election of members is possible.
- The board assigns volunteers to various roles as needed to accomplish tasks. Volunteers do not have a fixed term of office. However, "commitments" are expected to be met.
- The Board is supported by other volunteers and by Circles (working groups), which can be established permanently or temporarily.
- Each region has a Leadership Team that initiates and coordinates regional activities. The regional leadership team is headed by a board member responsible for the region. The leadership team is staffed according to regional requirement criteria and current activities.
- The Local Groups provide the "tangible environment" for members:
"Where the rubber meets the road" → events, working groups, personal contacts.
- A Local Group is coordinated by a volunteer who is a member with the regional leadership team or works closely with it.

Governance

Organizational Structure of the Chapter in one Picture



Volunteering @ PMI Germany Chapter

engage with competence



Volunteering @ PMI Germany Chapter – Share your Talent



As Volunteer of our Chapter, you will:

- Develop in your profession
- Try out and get to know new things
- Strengthen your self-confidence
- Advance the best and coolest way of working to shape our future
- Do something meaningful
- Build your global network with like-minded professionals.
- Expand your leadership experience and skills.
- Earn PDU's credit towards your PMI re-certification.
- Be able to document your involvement in PMI's Volunteer History.

Our opportunities for you: Volunteering @ PMI Germany Chapter



Volunteer Opportunities:

- PM-Summit: Congress Organisation
- Local Groups: Event organization
- Communication Experts
- PM-Coaching for NGOs
- Mentoring and Empowerment Programs
- Support Diversity activities
- And many More

More information:

[>> Volunteering in general](#)

[>> Volunteering Opportunities](#)

[Contact: volunteering@pmi-gc.de](mailto:volunteering@pmi-gc.de)

Finally

Everything summarized



Communication Channels

Many communication channels are open to members and interested parties – reading and writing,

- the chapter magazine with exciting topics from the Germany chapter
- via social channels
- via nationwide and regional newsletters – with the latest developments and projects



Come and stay in touch with us - give our community a voice

Contact: info@pmi-gc.de

Remember the Benefits – Remember your Advantages



Worldwide Network of passionate Project Managers +
Local Network of 27 (!) Local Groups



Monthly Newsletter



Nationwide discounts at Chapter Events and partner events



- Participation in **Members-only** Events
- Contribution to chapter projects
- Annual Volunteer Event
- Participation in Member only programs:
 - Female Empowerment Program,
 - Mentoring Program,
 - Social Responsibility Program,
 - Youth Empowerment Program
- Webinars – continuous learning



Participation in our Communities of Practice (CoPs) and in interest groups of partners



University Circle with valuable contacts to universities as well as other interesting Circles on topics such as diversity, social responsibility, etc.

Remember the Benefits – Remember your Advantages



Worldwide Network of passionate Project Managers +

Local Network of 27 (!) Local Groups



- Participation in **Members-only Events**
- Contribution to chapter projects
- Annual Volunteer Event
- Participation in Member only programs:
 - Female Empowerment Program,
 - Mentoring Program,
 - Social Responsibility Program,
 - Youth Empowerment Program
- Webinars – continuous learning



Monthly Newsletters



Participation in Communities of Practice (CoPs) and in interest groups or partners



Nationwide discounts at Chapter Events and partner events



University Circle with valuable contacts to universities as well as other interesting Circles on topics such as diversity, social responsibility, etc.

**Remember –
with each activity in the chapter
you are earning PDUs
for maintaining your certification**

Finally... if you are already a Member, do not forget to ...

- According to the PMI membership process and to the bylaws of the PMI Germany Chapter:

No chapter membership without PMI membership.

PMI and chapter membership expiration dates are the same regardless of when you add one or more Chapters.

- Hence, **Renew your PMI and Chapter membership together** for more benefits.
More information see link <https://www.pmi.org/membership/faq>
- PMI automatically turns off the **auto-renewal service** when the payment medium is changed, but the service cannot be activated in the 90 days before the expiry date due to the "restricted period"... - hence: enter new payment medium, renew membership, wait for new period, and activate auto-renewal again.
- For more information and application click <https://pmi-gc.de/en/join/member#for-pmi-members>



www.pmi-gc.de

Contact: info@pmi-gc.de