

04 2026

# One Idea. One Country. One Chapter. Welcome to PMI Germany Chapter



Project  
Management  
Institute.  
Germany

A top-down view of many hands of various skin tones stacked together in a circle. Many of the hands are wearing blue wristbands with the text 'EMFASIS' printed on them. The background is dark, making the hands stand out.

Eine Idee. Ein Land.  
Ein Chapter.  
One Idea. One Country.  
One Chapter.

PMI Germany Chapter e. V.

© Joerg Glunde, Vice President Members, 19.04.2026



Project  
Management  
Institute.  
Germany

# Contents

---

- [PMI Germany Chapter – Origins, Facts and Figures](#)
- [Benefits – Advantages of becoming a PMI Member](#)
- [Chapter Governance – How do we reach the Benefits for our Chapter Members](#)
- [Volunteering – how we engage](#)
- [Communication – Internal and External Channels](#)

# The PMI Germany Chapter

Origins, Facts, Figures



We promote professional project management in Germany through networking, qualification & social engagement

---

PMI Germany Chapter - the forum for project managers in Germany

# Strategy

## Pillars

### Purpose

**The reason and sense why we do what we do**

---

We offer a / are the network for all people who want to develop with project management, change something and be successful.

### Vision

**What the future world will look like if we are successful**

---

The community implements change professionally and successfully through the exchange, transfer of knowledge and methodological development of project management.

### Role

**How we behave and how we want to be in order to realize this vision**

---

We openly and competently connect people, knowledge, trends and methods in project management.

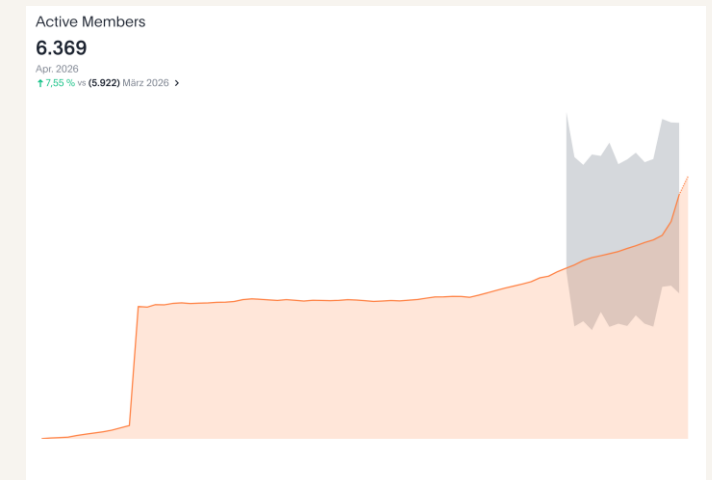
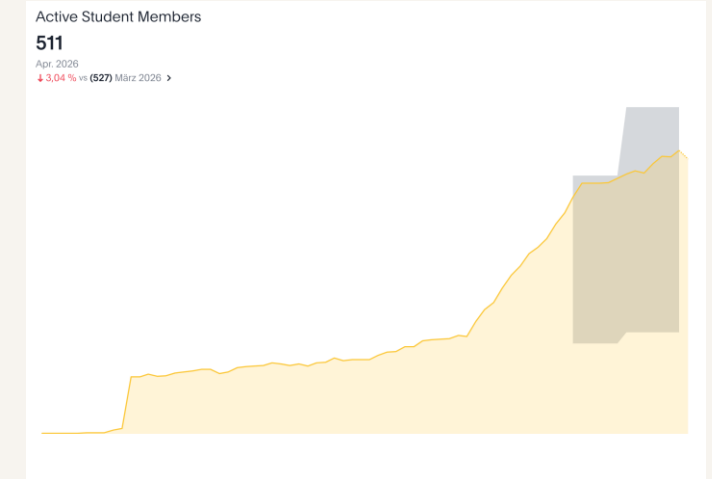
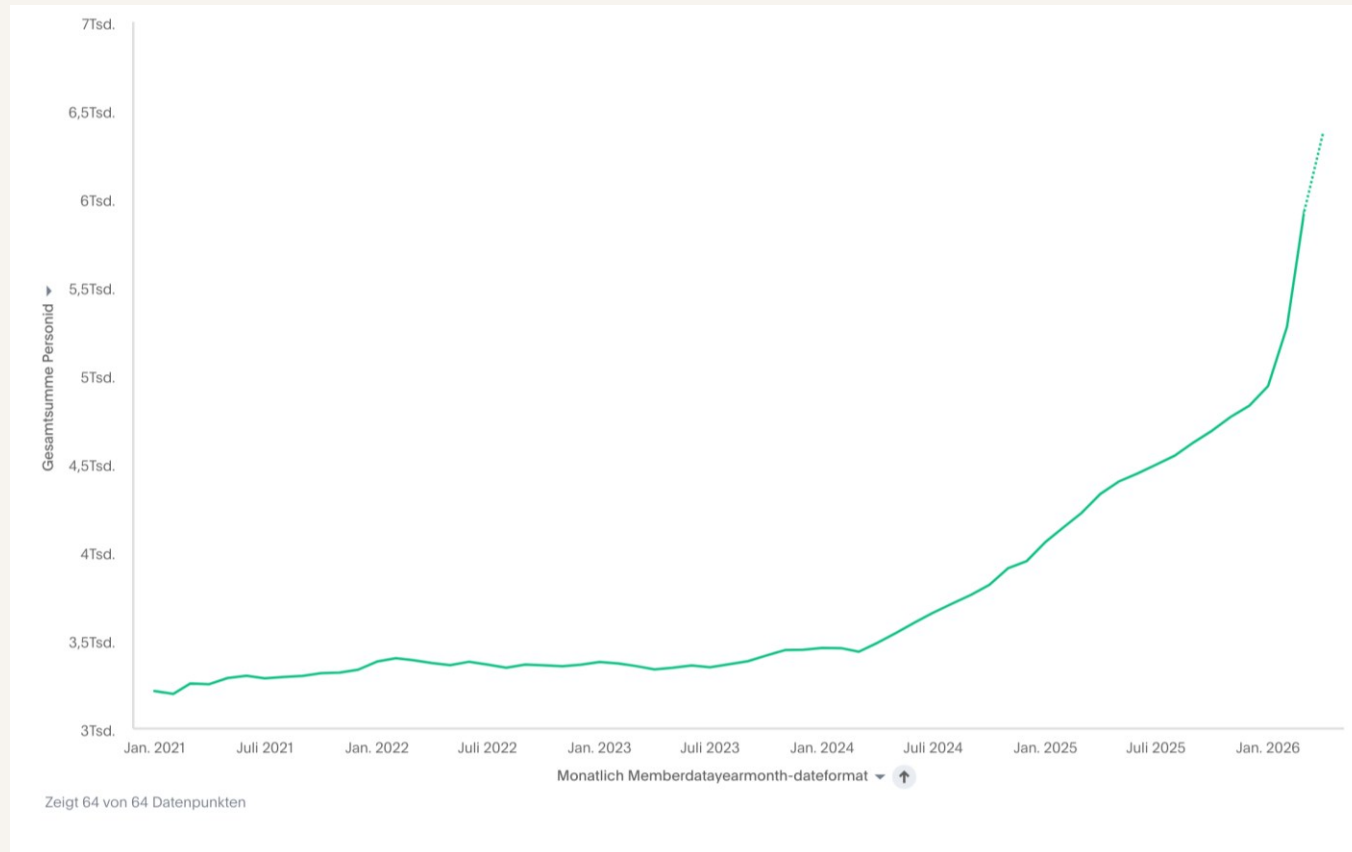
# The PMI Germany Chapter

## Facts, Figures, Data

---

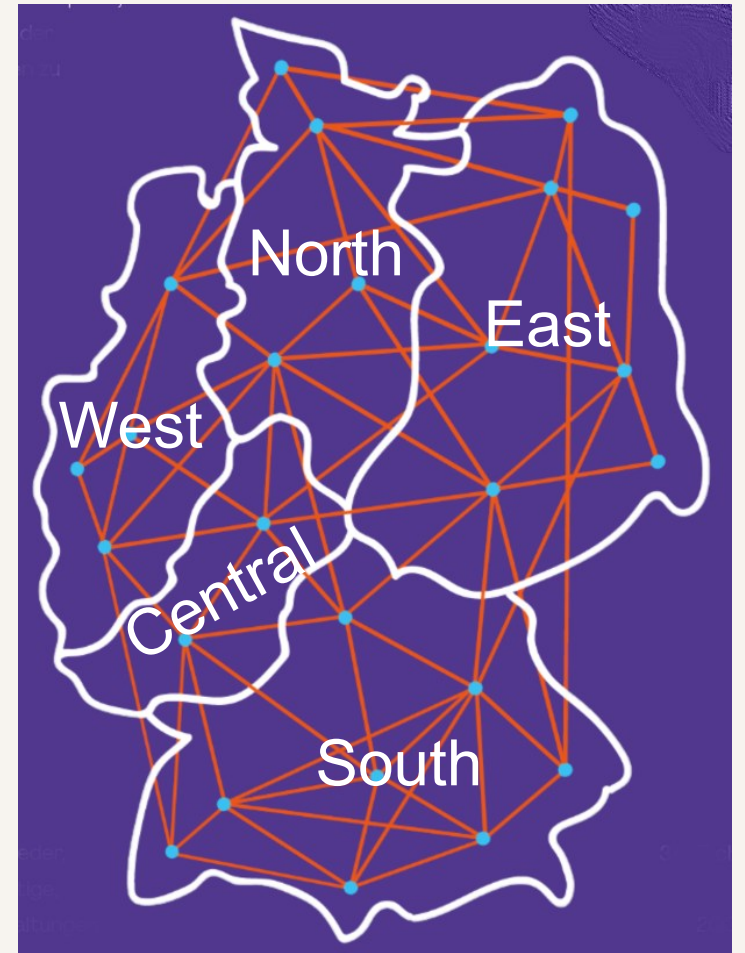
- PMI was founded in 1969 in Philadelphia. Today, it has members in almost all countries of the world.
- The PMI Germany Chapter was registered in the Berlin-Charlottenburg Register of Associations on Sept. 26, 2019, and the merger was registered on Dec. 21, 2020. Prior to that was a 30-year history with four chapters in Germany.
- The PMI Germany Chapter is a registered association – not for profit even if not officially recognized as such.
- The size of the PMI Germany Chapter is an extensive and attractive offering.
- Regional local groups provide personal contacts, exchange, and networking.
- Communities of Practice (CoPs) enable professional exchange, regionally and across regions.

# PMI Germany Chapter – Progressively Increasing



# Composition of the PMI Germany Chapter

- Five regions (administrative)  
*Supporting organizational level that assists the local groups in their tasks.*
  - including 25+ local groups (where activities take place)  
*Interaction space for members and volunteers. Activities for and with members and volunteers take place here. Events, projects, initiatives, meetings.*
- >> [Local Groups](#)
- **Approx. 12,000 PMI members in Germany**
    - of which approx. 6.400 chapter members in the Germany chapter
    - of which about 200 volunteers (the essential core of the chapter)



# Benefits

Your benefits as a member of the chapter



# Benefits – Advantages for Chapter Members



**Worldwide** Network of passionate Project Managers +  
**Local** Network of 25+ (!) Local Groups



- Participation in **Members-only Events**
- Contribution to chapter projects
- Annual Volunteer Event
- Participation in Member only programs:
  - Female Empowerment Program
  - Mentoring Programs
  - Social Responsibility Program
  - Youth Empowerment Program
- Webinars – continuous learning



Monthly Newsletter  
PMimpact, Quarterly Chapter Magazine



Participation in our Communities of Practice (CoPs), our Sub-Communities and in interest groups of partners



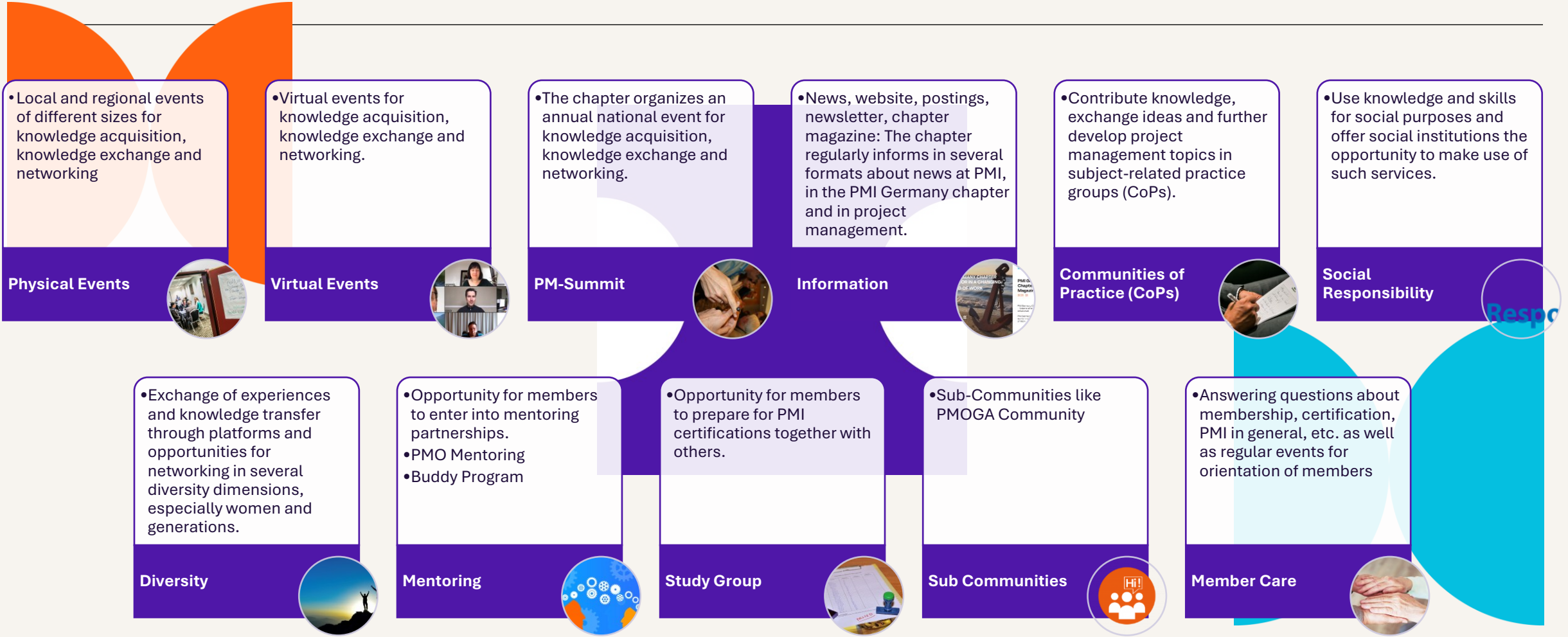
Nationwide discounts at Chapter Events and partner events



Participate in initiatives on topics such as diversity, social responsibility, etc.

# In Detail: Offers from the chapter for you

Offers of the chapter to members and those interested in project management.



Member Orientation - Member Value and Benefits

# As a Member, you are eligible to join various Local Groups

## Region North:

LOCAL GROUP HAMBURG  
LOCAL GROUP HANNOVER  
LOCAL GROUP BREMEN  
LOCAL GROUP BRAUNSCHWEIG/WOLFSBURG

## Region East:

LOCAL GROUP BERLIN  
LOCAL GROUP LEIPZIG  
LOCAL GROUP DRESDEN  
LOCAL GROUP THÜRINGEN (Erfurt)  
LOCAL GROUP NORDOST (Rostock)

## Region West:

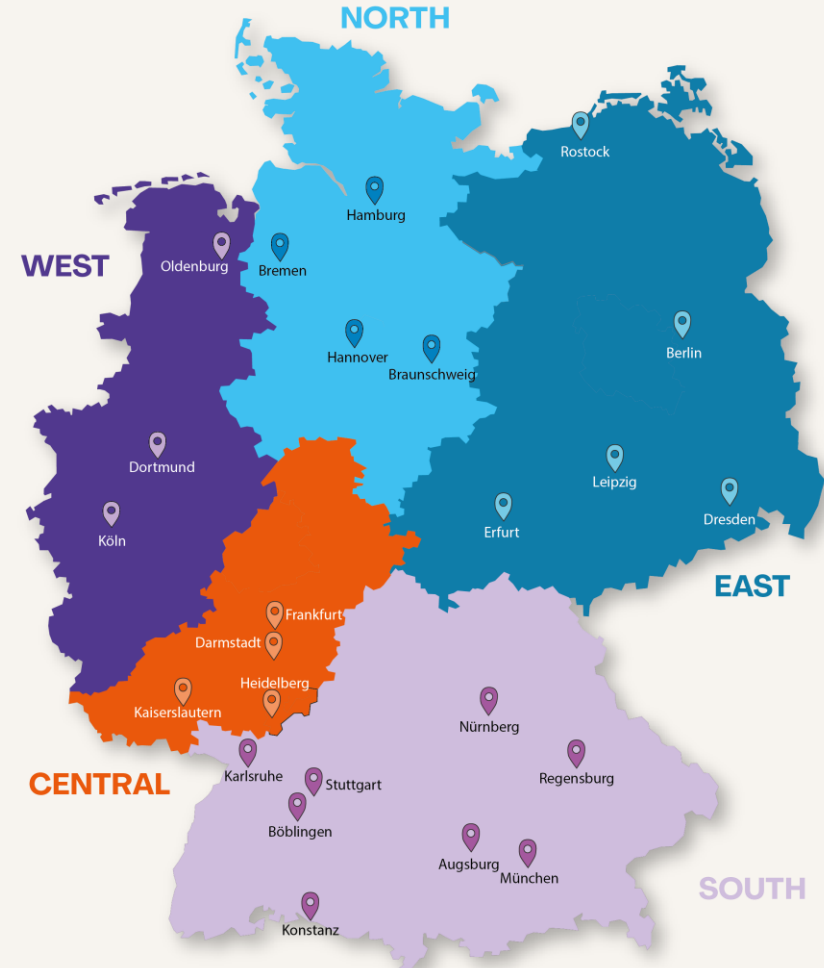
LOCAL GROUP RUHRGEBIET (Essen)  
LOCAL GROUP RHEINLAND (Köln)

## Region Central:

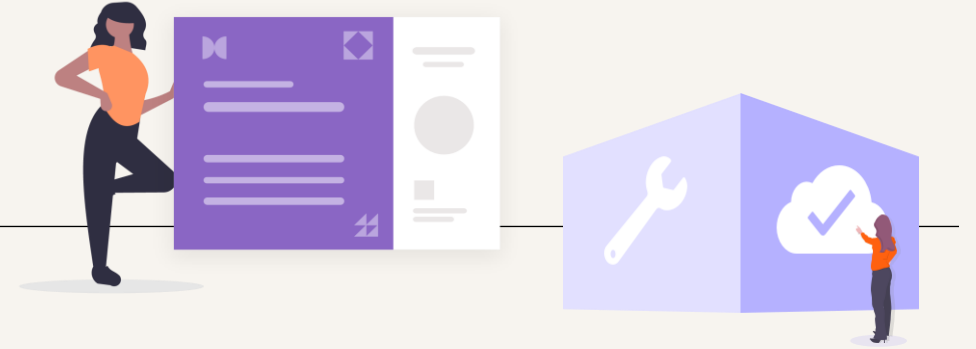
LOCAL GROUP RHEIN-NECKAR/ HEIDELBERG (Heidelberg)  
LOCAL GROUP SOUTHWEST (Kaiserslautern)  
LOCAL GROUP RHEIN-MAIN (Frankfurt)  
LOCAL GROUP DARMSTADT  
LOCAL GROUP MAINZ

## Region South:

LOCAL GROUP STUTTGART  
LOCAL GROUP MÜNCHEN  
LOCAL GROUP REGENSBURG  
LOCAL GROUP NÜRNBERG  
LOCAL GROUP AUGSBURG  
LOCAL GROUP KARLSRUHE  
LOCAL GROUP KONSTANZ  
LOCAL GROUP BÖBLINGEN  
LOCAL GROUP ULM



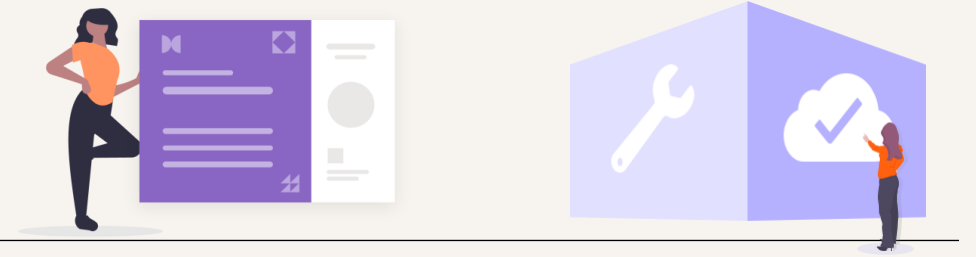
# ... plus offers from PMI



- ❖ Interact with other members, credential holders, and volunteers around the world. That's 700,000+ cool people like you.
- ❖ Enjoy free access to the many ways of earning PDUs.
- ❖ Access to ready-to-use tools and templates to collect and manage project information.
- ❖ As member, informative and insightful publications to keep you abreast of the latest trends.
- ❖ Use knowledge sharing, volunteering, and networking opportunities at the local and global level/s.
- ❖ eDiscover, Learn & Connect on >>> Projectmanagement.com, the one-stop shop for project management answers.
- ❖ Access to >>> PMI's global standards including a digital edition of *A Guide to the Project Management Body of Knowledge (PMBOK Guide) – Seventh Edition*, and on top free access to PMI Standards+™ and PMI Infinity™
- ❖ Access to Career coaching, a feature of PMI's job-searching site, The Project Management Job Board.
- ❖ Get special prices on PMI credential exams and renewal, conferences, seminars, books, products, and training tools is offered through PMI Store.
- ❖ Access to a library of webinars, addressing project management trends, best practices, how-to guides, and much more.

Seriously, what are you waiting for? Visit the website at [www.pmi.org/Membership](http://www.pmi.org/Membership) and join today.

# ... and for students?



- ❖ Download the PMBOK® Guide for free
- ❖ Save on career-advancing certifications
- ❖ Tap into a local and global community of professionals
- ❖ Power up your skills with on-demand webinars and insights
- ❖ Stay ahead of deadlines using 1,000+ free tools and templates
- ❖ Unlock access to real-world insights and opportunities
- ❖ Let PMI be your guide
- ❖ **And enjoy all chapter member benefits as described before**

❖ For only 32 US-\$ per year:

- PMI Membership
- **PLUS Chapter Membership in the PMI Germany Chapter**

Seriously, what are you waiting for?

Visit the website at  
<https://www.pmi.org/membership/student>  
and join today.

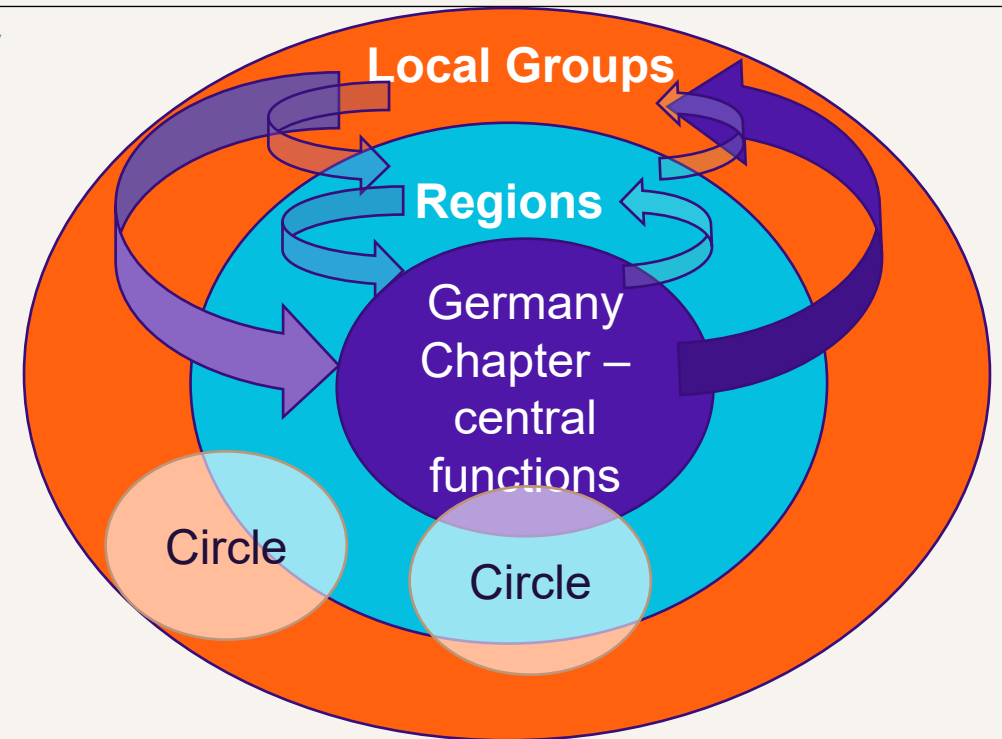
# Chapter Governance

Organization and structure



# Organization of the Chapter

- ❖ Responsibility for tasks of the Chapter for strategy implementation and achievement of its goals is broken down to the resorts described in the Association Rules.
- ❖ To support this, there are Teams, Circles, Local Groups and Projects. Circles, Local Groups and Projects are the organizational elements of the Chapter to implement its strategy and tasks.
  - ✓ **Board** Meeting of the board of directors to plan and control the tasks of the chapter necessary to fulfill the purpose of the association.
  - ✓ **Board Resorts** are responsible for tasks in the chapter and serve to achieve the strategic goals of the chapter.
  - ✓ **Teams** support the department in certain tasks and consist of members of a resort.
  - ✓ **Circles** can be located within a resort or operate across several functions; responsibility for a Circle is assigned to one resort in each case.
  - ✓ **Local Groups** provide chapter services at the local level and are each assigned to a regional resort.
  - ✓ **Circles and Local Groups** are generally designed to be permanent. The closure of a Circle results from changes in strategy and tasks of the chapter.
  - ✓ **Projects** also serve the chapter's task fulfillment and strategy implementation. They are temporary in nature.



# As volunteer, which are the different Circles where you could be part of and contribute?

---



\* after election for the board of directors

# What is a Community of Practice?



**Community of Practice (CoP):**  
Group of enthusiastic Chapter members who

- **exchange** ideas on practicable aspects in the respective "area"
- **share** experiences through publications.

**Aim:**  
to generate new ideas and concepts for practical application, which can then be used in practice.

**Practice is in the Foreground**

Every day, we are not in the ivory tower of theory, but try to find out and communicate which concepts, approaches or ideas work particularly well.

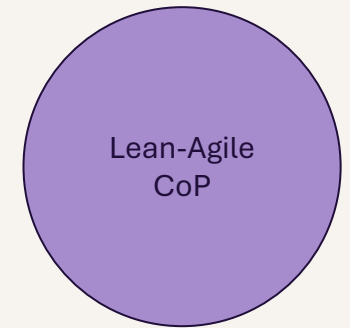
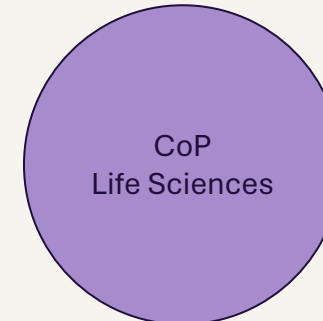
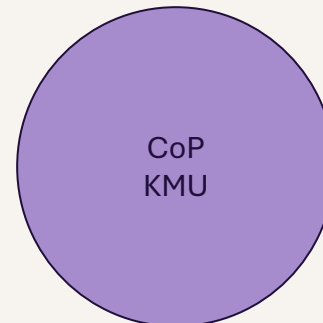
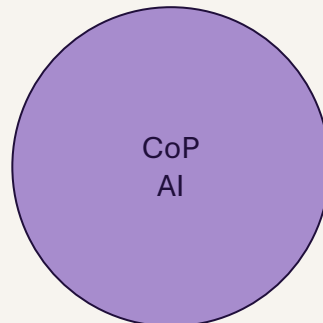
That is why the focus of a CoP should be on the "P" - namely "Practice".

**Hear the Podcast –**

What is a CoP in general and how CoPs became a part of the Chapter:

[>>> Podcast with Vice President Members Joerg Glunde and Thomas Wuttke \(German\).](#)

# As Member you will be the Core of our Communities of Practice



# Chapter Governance

## Principles (selection)

---

- The Chapter activities take place mainly in the Local Groups. Local volunteers initiate and implement events and all other activities

The teams in the regions with the local groups are the foundation of the PMI Germany chapter. We place more emphasis on contributing to the network than on having a position in the hierarchy.

→ As much autonomy as possible, as few central functions as necessary.

→ The responsibility for regional service provision lies with the regions. The Region Circle initiates, picks up, drives and supports activities in the local groups.

- We **communicate** transparently, with all parties involved.
- We live by the idea of **servant leadership**. In the manager's mind, the idea is to develop the target group positively and to enable them to make a positive contribution and achieve the goals they have set.  
Reference: <https://www.greenleaf.org/what-is-servant-leadership/>).
- We **appreciate** the time and energy that volunteers put in to **create benefits and secure the future of our chapter**. We do not want to overwhelm the self-commitment of the members, but rather **value the contributions of the volunteers** for the benefit of the chapter and the PMI as a whole as well as the project management profession.
- With **mutual respect and respect for ethical principles**, we support the application of the ethical principles according to the PMI Code of Ethics and being open to others (diversity).

# Chapter Governance

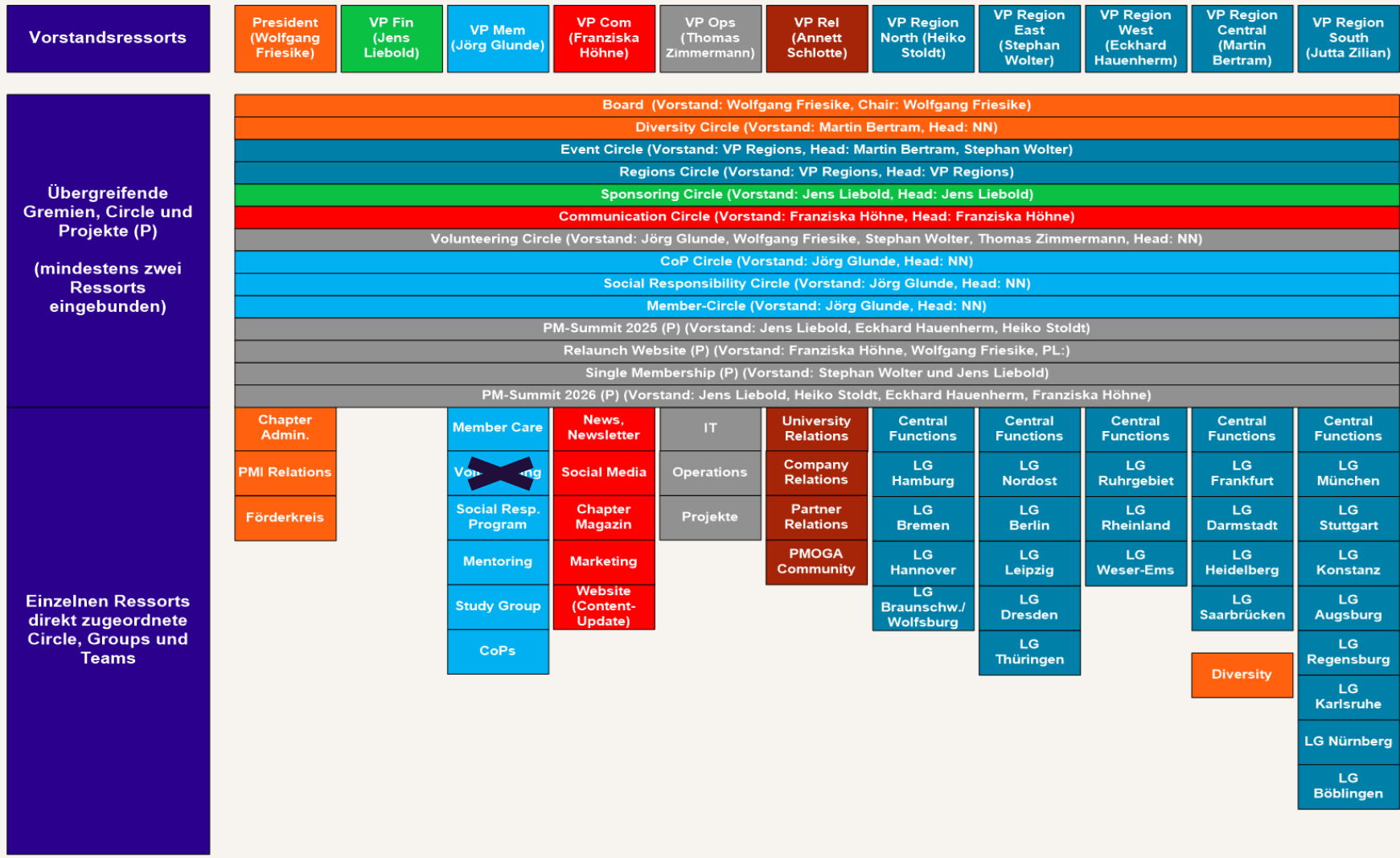
## Organization and Leadership

---

- The association is represented and led by a board of directors with currently **12 members** (between five and 15 are possible).
- The board is elected by the general assembly for a **period of three years**; a re-election of members is possible.
- The Board places **volunteers in various roles** that are required to complete the tasks. Volunteers do not have a fixed term of office. However, commitments are expected to be met.
- The board is supported by other volunteers and **circles**. These can be established permanently or temporarily.
- There is a **management team in each region** that initiates and coordinates the regional activities. The regional leadership team is led by a board member responsible for the region. The management team is staffed according to regional requirement criteria and current activities.
- The **local groups** offer the "tactile environment" for the members: "where the rubber meets the road" → events, working groups, personal contacts.
- A local group is **coordinated by a volunteer** who is a member of the regional leadership team or works closely with it.

# Governance

## Organizational Structure of the Chapter in one Picture



Since April 2026, there has been a Vice President Volunteering, Alexandra Bruckschen.

She is responsible for the strategic and operational overall management of volunteer management at PMIGC. Her tasks include the recruitment, development and support of volunteer members for various functions of the association as well as ensuring the associated efficient administrative processes. It promotes a motivating and appreciative volunteer culture of volunteering and works closely with the responsible departments to meet the need, motivation and to make the long-term retention of volunteers sustainable.

These tasks were thus transferred from the Members Department to the Volunteering Department as of April 2026.

# Volunteering @ PMI Germany Chapter

engage with competence



# Volunteering @ PMI Germany Chapter – Share your Talent

---



As Volunteer of our Chapter, you will:

- Develop in your profession
- Try out and get to know new things
- Strengthen your self-confidence
- Advance the best and coolest way of working to shape our future
- Do something meaningful
- Build your global network with like-minded professionals.
- Expand your leadership experience and skills.
- Earn PDU's credit towards your PMI re-certification.
- Be able to document your involvement in PMI's Volunteer History.

# Our opportunities for you: Volunteering @ PMI Germany Chapter

---



## Volunteer Opportunities:

- PM-Summit: Congress Organisation
- Local Groups: Event organization
- Communication Experts
- PM-Coaching for NGOs
- Mentoring and Empowerment Programs
- Support Diversity activities
- And many More

More information:

[>> Volunteering in general](#)

[>> Volunteering Opportunities](#)

[Contact: volunteering@pmi-gc.de](mailto:volunteering@pmi-gc.de)

# Final

Everything summarized again



# Communication Channels

---

Many communication channels are open to members and interested parties – reading and writing,

- the chapter magazine with exciting topics from the Germany chapter
- via social channels
- via nationwide and regional newsletters – with the latest developments and projects



Come and stay in touch with us - give our community a voice

Contact: [info@pmi-gc.de](mailto:info@pmi-gc.de)

# Remember the Benefits – Remember your Advantages



**Worldwide** Network of passionate Project Managers +  
**Local** Network of 25+ (!) [Local Groups](#)



- Participation in **Members-only** [Events](#)
- Contribution to [chapter projects](#)
- Annual Volunteer Event
- Participation in Member only programs:
  - Female Empowerment Program
  - Mentoring Programs
  - Social Responsibility Program
  - Youth Empowerment Program
- Webinars – continuous learning



Monthly [Newsletter](#)  
[PMimpact](#), Quarterly Chapter Magazine



Participation in our [Communities of Practice](#) (CoPs), our Sub-Communities and in interest groups of partners



Nationwide discounts at [Chapter Events](#) and partner events



Participate in initiatives on topics such as diversity, [social responsibility](#), etc.

# Remember the Benefits – Remember your Advantages



**Worldwide** Network of passionate Project Managers +  
**Local** Network of 25+ (!) Local Groups

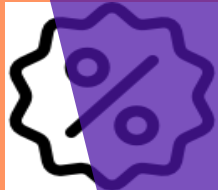


- Participation in **Members-only Events**
- Contribution to chapter projects
- Annual Volunteer Event
- Participation in Member only programs:
  - Female Empowerment Program,
  - Mentoring Program,
  - Social Responsibility Program,
  - Youth Empowerment Program
- Webinars – continuous learning

**Remember –  
with each activity in the chapter  
you are earning PDUs  
for maintaining your certification**



Monthly Newsletters



Nationwide discounts at Chapter Events and partner events



University Circle with valuable contacts to universities as well as other interesting Circles on topics such as diversity, social responsibility, etc.

# A few more things about membership...

---

- In accordance with PMI's standard membership process and in accordance with our Bylaws:

No membership in the chapter without membership in the PMI

- The **validity period** of your PMI and Chapter membership is the same regardless of when you add one or more chapters. So, **renew your PMI and Chapter membership together** to get more benefits. For more information, see: <https://www.pmi.org/membership/faq>
- PMI automatically switches off the **autorenewal service** when you change the payment medium, but the service cannot be activated in the 90 days before the expiration date due to the "restricted period"... - so: enter a new means of payment, renew membership, wait for a new period, and reactivate auto-renewal.
- For **more information** and to register for the PMI Germany Chapter, click here: <https://pmi-gc.de/en/join/member#for-pmi-members>



[www.pmi-gc.de](http://www.pmi-gc.de)

Contact: [info@pmi-gc.de](mailto:info@pmi-gc.de)

Member Care: [membercare@pmi-gc.de](mailto:membercare@pmi-gc.de)